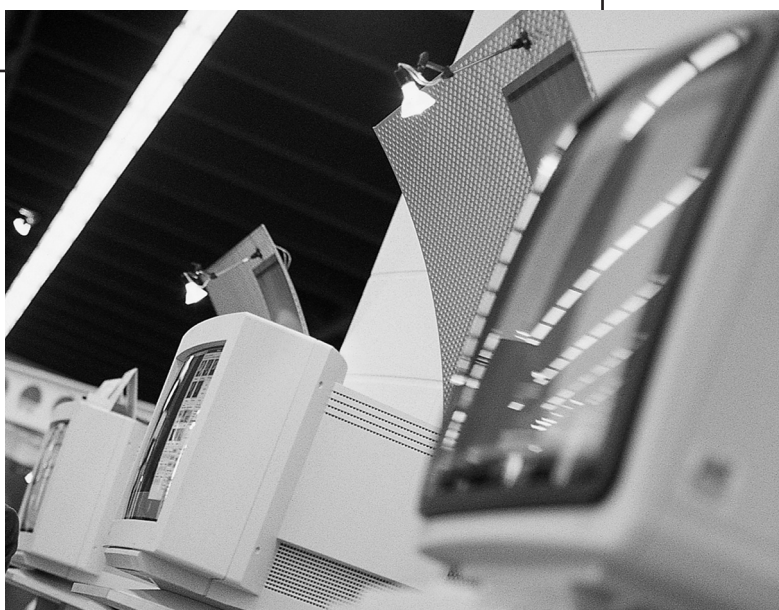
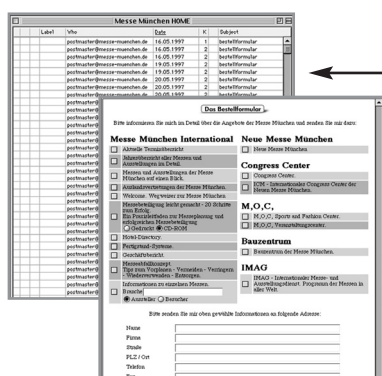


Internet – part of life today and a must on your exhibition stand, too.

Search, find and print out news or product information, receive messages and stay in touch at all times by digital link. During trade fairs and exhibitions you can continue to have convenient access to the important information medium Internet and receive and send post by e-mail.



TV Connection



Visual focal point – TV programmes of your choice.

You can choose from the following options for transmitting TV programmes on your stand:
satellite, Astra digital or DVB-T.
We would be pleased to advise you on the details.

Internet access via LAN

Messe München provides a communications platform with an application-neutral network covering the whole of the exhibition site which makes a wide variety of different communications methods/applications possible.

The carrier for communications services has installed two Internet connections with a transmission capacity of up to 34 Mbit/s on the exhibition site.

This provides the option of using the Internet via the Gigaethernet-based infrastructure.

Here the user has up to 100 Mbit/s switched at his disposal in the access area via standard RJ 45 terminal boxes.

Services available:

- Internet access incl. IP address
- Additional IP addresses

Internet access via A-DSL

Messe München provides you with the connection incl. splitter, DSL modem and ISDN/NTBA. The A-DSL connection includes an ISDN multiple connection (see 6.1, item no. 34055). In combination with the ISDN connection's two base channels, you can telephone, fax and surf the Internet simultaneously.

A-DSL 2000: downstream 2048 kbit/s, upstream 192 kbit/s

A-DSL 6000: downstream: 6016 kbit/s, upstream 576 kbit/s

Access identification and a flat-rate arrangement is provided for a period of up to 7 days.

Moreover, other DSL options (symmetrical and asymmetrical) can be provided on request.

Extension of DSL weekly flat rate

Should you use your connection beyond the 7-day period, the extension of the weekly flat rate will automatically come into force (see 6.2, No. 5).

Broadband connection (TV)

A broadband communications network suitable for hyperband and offering blanket coverage is installed throughout the trade fair centre enabling every exhibition stand to receive a wide range of TV programmes.

Programmes are transmitted using the PAL, B/G standard with adjacent channel allocation. The antenna connections (BC terminal boxes) that can be obtained from us provide you with a selection of approx. 25 television programmes. An overview of the available programmes can be supplied on demand.

It can be arranged on request for any channels that do not automatically feed into the local network to do so. In the event of this being required, it would be considered to constitute a separate order and must have been placed with us at least 14 days prior to the trade fair commencing.

Return to:
Messe München GmbH
Hauptabt.
Techn. Ausstellerservice
Messegelände
81823 München
Germany

IT/Telecommunications support
Tel.: +49 (0) 89 949 - 2 12 50
Fax: +49 (0) 89 949 - 2 12 58

Closing date: 4 July 2008

Exhibitor
Street/P.O.Box
Country, Town, Postcode

Internet Access and Broadband Connection (TV)

6.2

Submit in duplicate
Page 1 of 2

Event: ESC Congress 2008
Date: 30 August – 3 September 2008
Hall Stand no.
Contact
Phone with area code and ext. Fax with area code and ext.
E-mail

We hereby order – on behalf and at the request of the aforementioned exhibitor – subject to acceptance of the terms of business set out on page 2:

No.	Item No.	Description	Price per connection:	Qty.
1.	34062	Internet access via LAN Standard Ethernet IEEE 802.3 with <u>one</u> fixed, public IP address incl. usage charges (PC with standard Ethernet card required; connecting system: RJ45)	EUR 649.00	
2.	34063	Additional IP addresses for Internet access via LAN	EUR 46.00	
3.	34086	Internet access via A-DSL 2000 Connection incl. splitter, DSL modem, ISDN/NTBA 192/2048 kbit/s incl. access data/flat rate, max. usage 7 days (see No. 5 for usage extension) (PC with standard Ethernet card required; connecting system: RJ45)	EUR 439.90	
4.	34087	Internet access via A-DSL 6000 Connection incl. splitter, A-DSL modem, ISDN/NTBA 192/2048 kbit/s incl. access data/flat rate, max. usage 7 days (see No. 5 for usage extension) (PC with standard Ethernet card required; connecting system: RJ45)	EUR 609.90	
5.	34085	Extension to DSL weekly flat rate (up to max. 30 days)	EUR 69.00	
6.	34019	Broadband connection (TV) Transmission in PAL B/G standard with adjacent channel allocation incl. BC terminal box	EUR 157.00	
7.	34096	Additional fee for orders received later than 2 weeks prior to start of the official set-up	EUR 76.40	
8.	34099	Flat rate for modifications/Cancellation fee	EUR 82.50	

Required date of availability for ordered equipment: _____

Please note that it is essential to submit a plan drawing (form 6.4) for the provision of services.

The above prices refer exclusively to access/connections in the halls. Internet access and broadband connections in the outdoor exhibition area on request.

Place, date
Company stamp and legally binding signature of exhibitor

Terms of Business for Information and Communications Services

1. Orders

The information and telecommunication services detailed overleaf are to be ordered exclusively through Messe München GmbH (MMG). Orders are subject to approval by MMG; this approval may also be implicit, e.g. in that the requested services are supplied.

The exhibitor is entitled to cancel an order for the information and telecommunication services detailed overleaf, either partially or entirely, on condition that notice of cancellation is received by MMG no later than three weeks prior to the opening of the fair or event. In all other cases, the contract can only be revoked with the written approval of MMG. MMG is not obliged to grant such approval. MMG will grant approval only on condition that the exhibitor pays 20% of the value of the contract (plus VAT) as a standard cancellation fee. If MMG can provide evidence that the costs incurred were greater than the amount of the standard cancellation fee, then MMG is entitled to invoice the exhibitor for the actual costs, rather than the standard cancellation fee. If the exhibitor can provide evidence that the costs incurred by MMG were lower, then the standard cancellation fee may be reduced accordingly.

If the exhibitor wishes to modify an order for services after it has already been fulfilled by MMG, in particular with regard to installations on the exhibition stand, then MMG is entitled to charge a modification fee of **EUR 82.50** plus VAT for each modification, on condition that MMG actually commits to carrying out the modification. An additional fee of **EUR 76.40** plus VAT will be raised on orders received later than 2 weeks prior to start of the official set-up.

2. Period of Availability

The information and communication services ordered will be made available for the duration of the trade fair in question, as well as for six hours before the beginning and six hours after the end of the trade fair. If provision of information and communication services is required outside this period this additional availability must be ordered separately from MMG. These services will be charged additionally.

3. Assignment

All products and services ordered will be provided by Messe München GmbH or its designated subcontractors and will be assigned to exhibitors on a rental basis. If an exhibitor uses his own terminal equipment this must conform to the legal regulations currently in force, including the valid EU directives applicable to terminal equipment and the CCITT Recommendations, especially CCITT Recommendation i430. The analog lines provided are PBX extensions with a dial tone that differs from that of the public telephone network.

If an exhibitor fails to comply with this obligation and malfunctions occur as a result, MMG shall be entitled in particular to demand reimbursement of the costs of analysing the malfunctions and for fault clearance from the exhibitor. MMG shall also be entitled to demand that the exhibitor immediately disconnects from the network the terminal equipment causing the malfunctions. For Internet accesses the network cards used in the exhibitor's PC must conform to the Ethernet specifications (IEEE 802.3). The IP addresses applied for from the MMG address range (Class C address) will be made available to the exhibitor with the order confirmation. The exhibitor may not under any circumstances use IP addresses other than those provided by MMG or modify the prescribed subnet masks. If an exhibitor fails to comply with this obligation and malfunctions occur as a result MMG shall be entitled in particular to demand reimbursement of the costs of analysing the malfunctions and for fault clearance from the exhibitor. MMG shall further be entitled to exclude from the LAN any exhibitors who despite previous warnings use IP addresses other than those assigned to them or who use subnet masks other than those prescribed for them and to demand reimbursement of the associated costs. In the event of network functionality being attacked or other attacks being carried out, MMG reserves the right to block the given connection on an either temporary or permanent basis.

If malfunctions occur in the PC of an exhibitor who has used IP addresses other than those assigned to him or has modified the subnet mask, MMG will clear the fault at the request and risk of the exhibitor at the MMG prices valid at the time of the trade fair.

At the request of the exhibitor MMG will configure the PC, if this is technically and operationally possible, at the exhibitor's risk and at the MMG prices valid at the time of the trade fair.

4. Service Centre

A service centre has been set up on the exhibition site in case of faults. This service centre can be contacted under the number (+49 89) 9 49-1 16 66 during the following times:

- set-up period: 8.00 to 18.00
- 1st day of event: 1 hour prior to event commencing through to end of event
- during the trade fair: in accordance with the opening hours of the given event
- last day of event/ 1st day of dismantling period: from start of event through to 20.00
- dismantling period: 9.00 to 14.00

5. Liability

The exhibitor will be invoiced for the cost of replacing lost or damaged terminal equipment. The manufacturer's list price shall apply in case of doubt. Exhibitors bear the liability for the loss, damage or destruction of all communications equipment made available. If liability is conditional upon fault, it is the responsibility of exhibitors to provide evidence that they are not at fault. As far as MMG's liability is concerned, item 6 of the General Terms of Contract for the Exhibitors' Service Booklet applies.

If an order is received by MMG later than five weeks prior to the opening of the fair or event, then acceptance of the order does not imply that MMG assumes any responsibility for the proper and timely fulfilment of service provision. In such cases, should MMG fail to fulfil service provision or fail to fulfil service provision properly and on time, the exhibitor is only entitled to cancel the contract for the information and telecommunication services detailed overleaf, or to reduce the agreed remuneration accordingly. All further claims are excluded.

6. Call Connections

All call connections listed in items 1 – 5 within the trade fair centre network, e.g. between trade fair stands or to trade fair service centres, are free of charge.

A charge of **EUR 0.11** plus VAT per tariff unit will be made for external calls. The tariff rates of DTAG (Deutsche Telekom AG) shall apply for the calculation of call charges.

The "meter reading" in the TC system of Messe München GmbH shall apply exclusively for the calculation of call charges (tariff units). The terms of business and description of services of external network operators (e.g. Deutsche Telekom AG) shall apply for their services and are an integral part of the contract.

7. Return of Terminal Equipment

Terminal equipment will be taken back by Messe München GmbH on the last day of the dismantling time at the latest. If in an exceptional case the equipment is not taken back, the exhibitor must return terminal equipment still in his possession to Messe München GmbH and obtain a confirmation of receipt. In cases of doubt this confirmation of receipt will provide proof of return.

8. Connection Conditions

All connections/equipment ordered will be provided exclusively by Messe München GmbH. The specified prices apply for provision in one-storeyed stands. In the case of multi-storeyed stands the price for provision shall apply only for installation on the ground level. The connection will be provided from the allocated point of connection in the utilities conduit to the required location at the stand. The connecting line must not be more than 12 m long; this also applies to the structured cabling for the connecting cable to the LAN. The exhibitor is required to make allowance for this when planning the stand. An extension of this connecting line is available on request. A special order is required for an extension of the connecting line or provision in the upper level of multi-storeyed stands. Connections for telephone, fax, modem, EURO-ISDN and for 2/4 wire connections will be provided using the RJ45 connection system (according to EIA/TIA). Private terminal equipment can only be used on the EURO-ISDN and fax/modem connection. Fibre-optic connections (single-mode, multimode) use the E2000 connection system. For applications requiring a transmission speed of more than 2 Mbit/s and for services that can only be carried out on the basis of special orders please contact our team of consultants to clarify the details early on.

Externally required communications connections may only be provided by the network operator as far as a central transfer point on the exhibition site stipulated by Messe München GmbH. The extension of these connections from the transfer point to the exhibitor's stand will be implemented exclusively by Messe München GmbH via the on-site network.

Messe München GmbH will then order the external connection path as far as the transfer point (e.g. from Deutsche Telekom AG).

Services provided by the network operator will be shown and charged separately.

Messe München GmbH will coordinate the provision of the complete connection.

9. General Terms of Contract for the Exhibitor Services

Messe München GmbH's General Terms of Contract for Exhibition Services apply additionally.