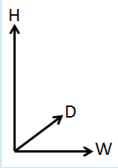







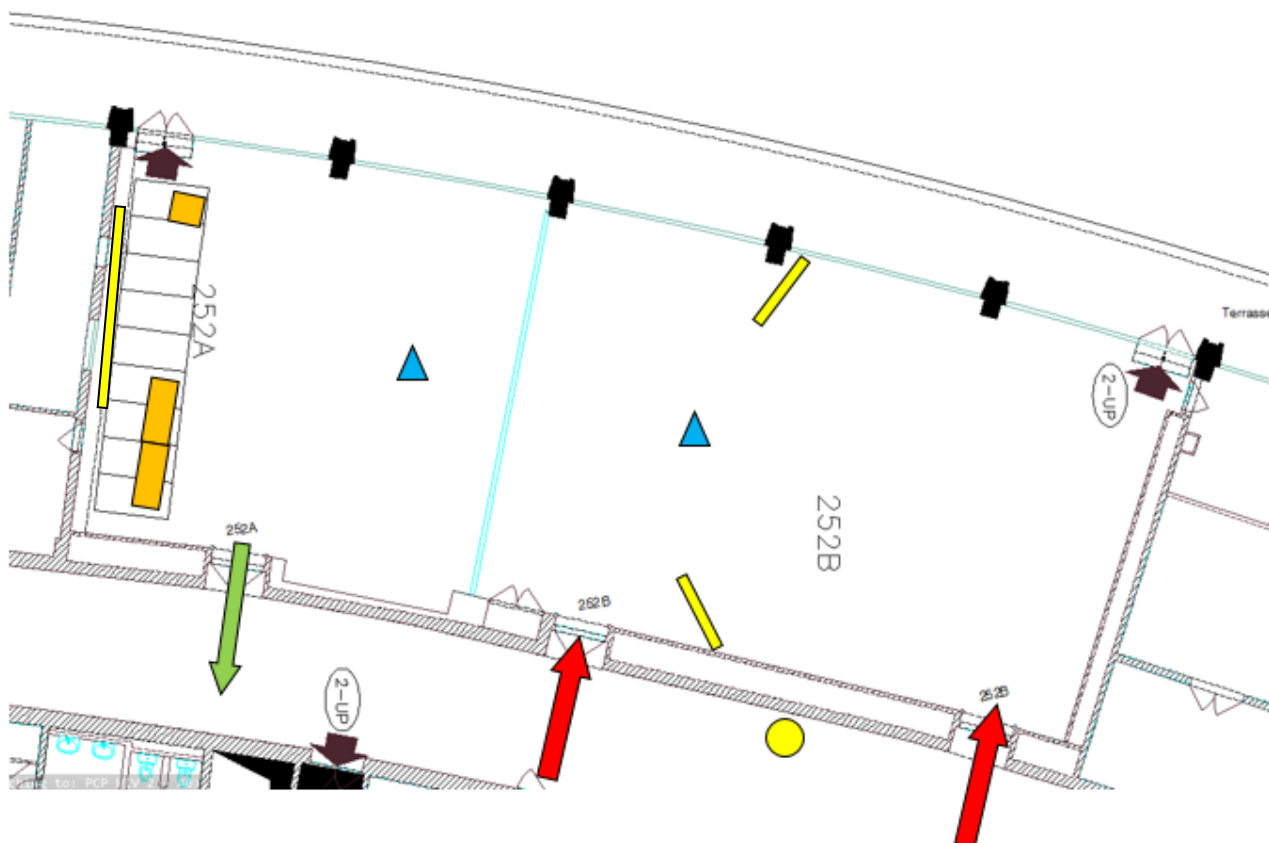
# Lecture Room Technical Specifications

<b>Congress name</b>		<b>Heart Failure 2017</b>
<b>Room Name</b>		<b>Matisse</b> +( Room 252 A+B)
<b>Capacity</b>		310 seats arranged in theatre style
<b>For Chairpersons</b>	Stage size	W: 9 D: 2 metres
	Table Dimension	W: 1,45 D: 0,55 H: 0,745 metres
	Standard setup	2 tables + 4 chairs
	Microphones	4 wired
	Video monitor	2 screens 32" in front of table
	Camera	n/a
<b>For Speaker</b>	Stage size	Same as Chairpersons
	Lectern Dimension	W: 0,595 H: 1,105 metres
	Microphones	2 wired goose neck
	Computer	1 laptop networked with SSC
	Camera	n/a
<b>Main screen (16:9)</b>		1 screen 4,8 x 2,70 metres (plus 2 x 55" as relay screens)
<b>Projector</b>		Barco HDX -W14 / 13000 ANSI lumens
<b>PinP</b>		n/a
<b>Audience</b>	Microphones	2 wireless for Q&A
<b>External monitor for room programme and overflow</b>		1 screen 50" approx. Overflow capacity: 30 pax.



## Lecture room plan:

-  Screen location & additional
-  Selected entrance(s)  Possible exit
-  External screen for overflow / information
-  Q&A Microphone location



Updated January 2017