

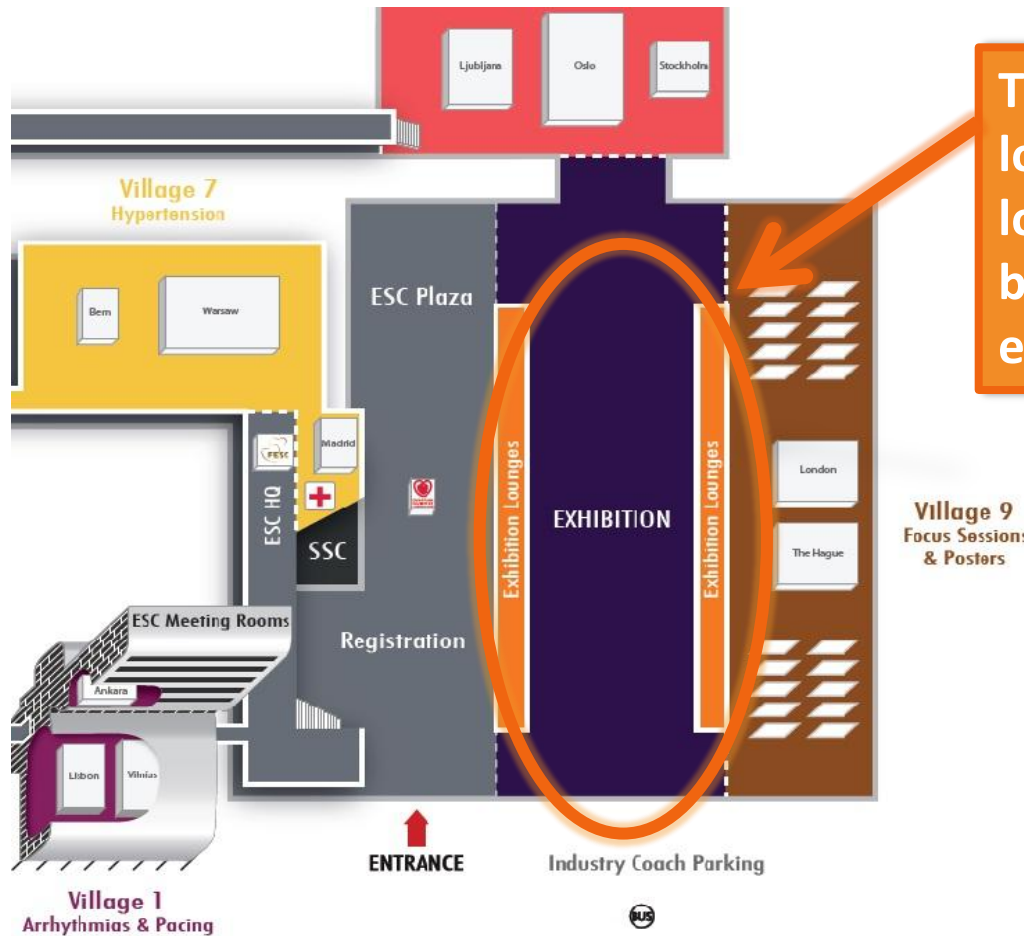
ESC Congress 2013 Exhibition Lounges

**RAI Amsterdam,
31 August - 4 September 2013**





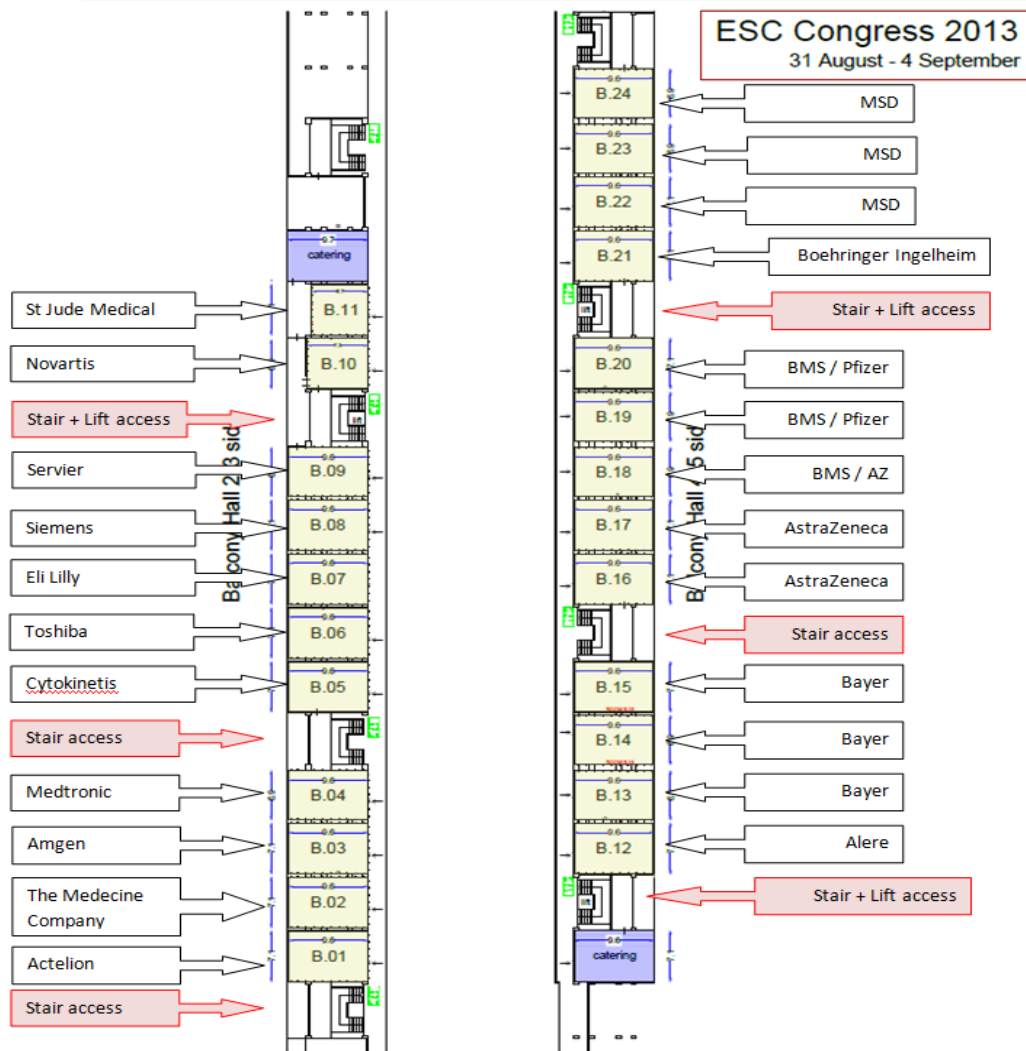
Location



The exhibition lounges are located on the balconies of the exhibition hall



Exhibition Lounge dispatch – Room assignment



Amsterdam RAI / Balcony Hall 1



General Conditions

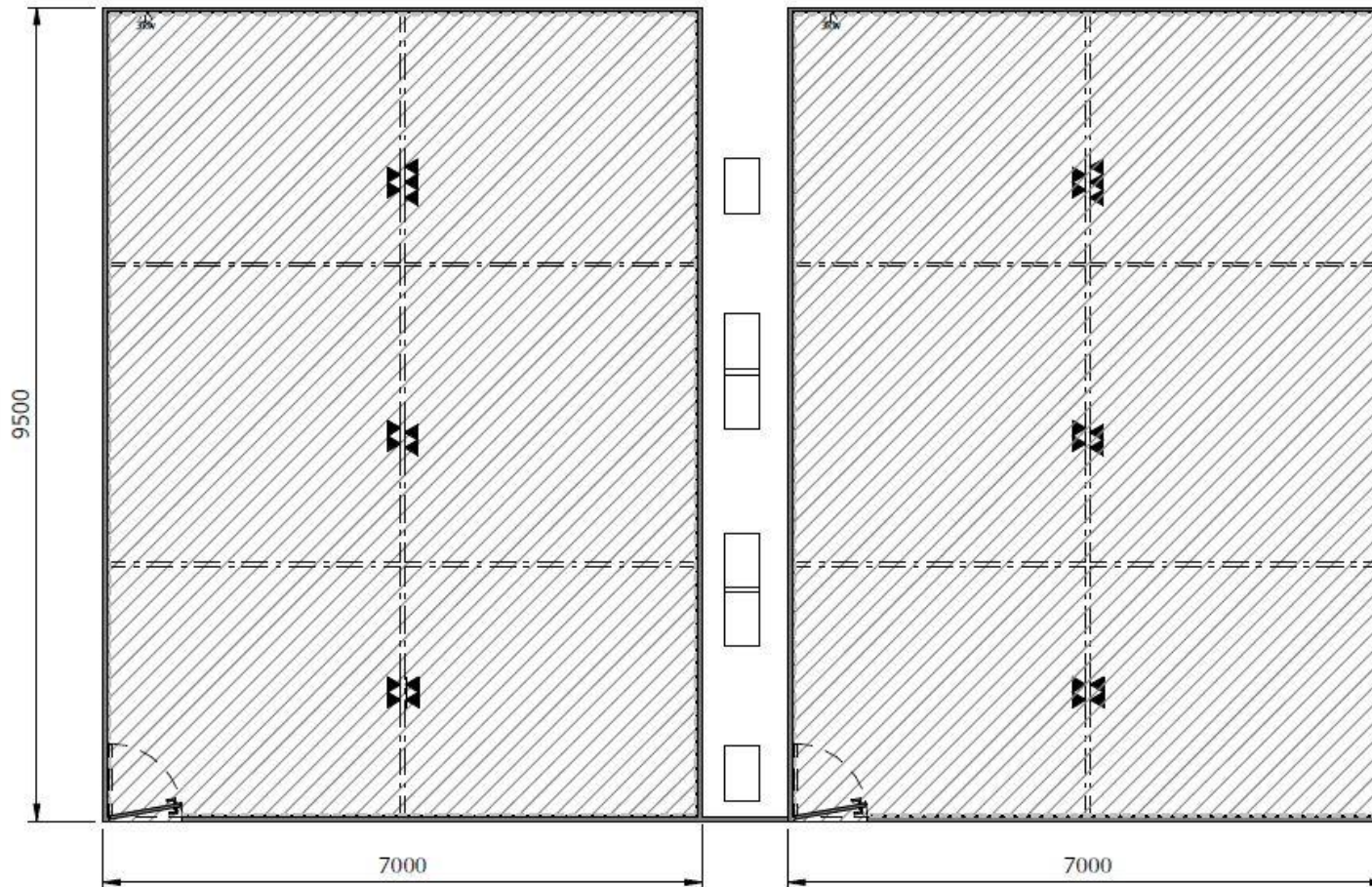
- **Exhibition Lounge availability:** exhibition lounges are rented for a minimum of 5 days, Friday 30 August to Tuesday 3 September from 08:00 to 20:00
- **Rental Period:** Friday 30 August to Tuesday 3 September
From 08:00 to 20:00
- **Dimensions:** 9,5m long 7m wide - 66m²
- **Keys:** 2 keys per room will be available on-site upon your arrival at the RAI exhibitors service desk in the registration area
- **Room-set-up:** Set-up is charged additionally and must be ordered through RAI Amsterdam Banqueting services



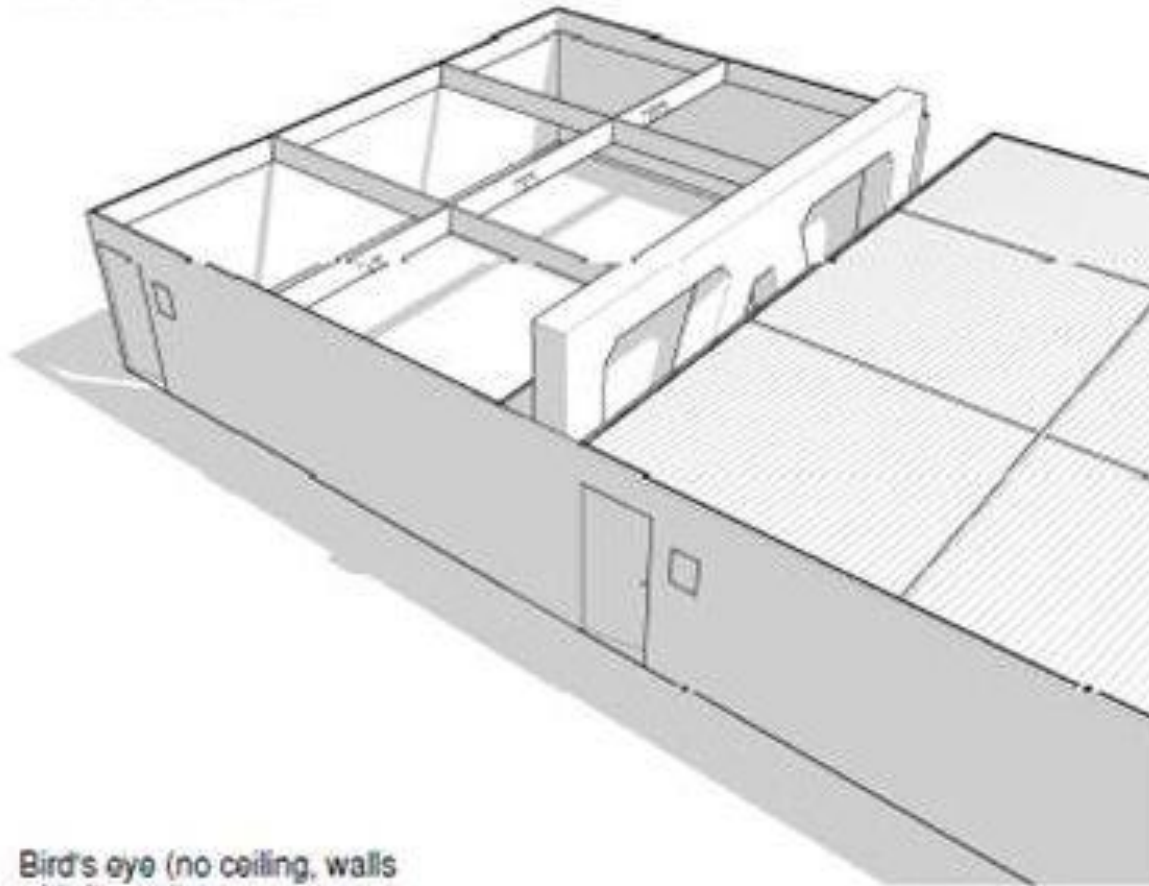
General Conditions (2)

- **Wi-Fi:** Wi-Fi service is charged additionally and must be ordered through RAI Amsterdam Banqueting services
- **AV-equipment:** AV equipment is charged additionally and must be ordered through RAI Amsterdam Banqueting services
- **Cleaning:** Daily Cleaning at the end of the day is included
- **Room dismantling:** Tuesday 3 September 22:00 to 00:00 through Wednesday 4 September 00:00 to 22:00
- **Industry Corporate name and Logo:** Limited to A3 size signage near entrance door. Only corporate name and/or logo allowed. Product names and logos are forbidden. Additional signs, posters or roll-up in the convention centre will be removed

Room Floor Plan



Room Floor Plan



Bird's eye (no ceiling, walls
with flannel)



Room Signage

- **Deadline 26 July 2013**
- **Specifications:** A3 Size, portrait format signage is included in the exhibition Lounge rental cost. Artwork must be approved by **ESC** prior sending to Amsterdam RAI for production
- **Logo Files:** Files should be in Adobe Illustrator (all in outlines / vectorized) with the used pms color numbers included.
- **Full-color blow-up's:** Files need to be in high res. pdf files (all text / fonts/ logo's to be in outlines / vectorized) with the used pms color numbers included.

Please don't send us qxd, .idd, .fh, .cdr, .jpg, .tiff, .bmp, .png or other related files these are not workable.

No print marks such as crosshairs and crop marks in the document.

NET formatting (clean) format delivery.



Room set up / AV equipment / WiFi / Telecommunications / Hostesses / Catering

- **Deadline to place your orders: 2 AUGUST 2013**
- **Official Supplier: Amsterdam RAI**

Tel: +31 (0) 20 549 18 12

Fax: +31 (0) 20 549 19 64

E-mail: banqueting@rai.nl

- Logistics and Catering Order form: [click here](#)

Exhibition Lounge access

- For Security reasons, access to the exhibition hall outside of opening hours is limited to persons holding an exhibitors' badge. Persons with an exhibiting company can also receive a green sticker at the Exhibitor Registration Desk to access the exhibition outside of exhibition hours.
- **Friday 30 August**
08:00-22:00 Access for Exhibitors / No access for delegates
- **Saturday, 31 August**
08:00-20:00 Access for Exhibitors
15:00-18:00 Access for delegates
- **Sunday 1, Monday 2, September**
08:00-20:00 Access for Exhibitors
09:00-18:00 Access for delegates
- **Tuesday 3, September**
08:00-22:00 Access for Exhibitors -
09:00-18:00 Access for delegates
- **Wednesday, 04 September**
Exhibition Hall closed

Exhibitors must remove all personal items from the room by **Tuesday 3 September 22:00.**

Wednesday 4 September
00:00 – 22:00 exhibition lounge and booth dismantling

ESC CONGRESS 2013

amsterdam

THE NETHERLANDS

31 AUGUST - 4 SEPTEMBER



Thank you!

**The ESC wishes
you a very successful ESC congress
2013**