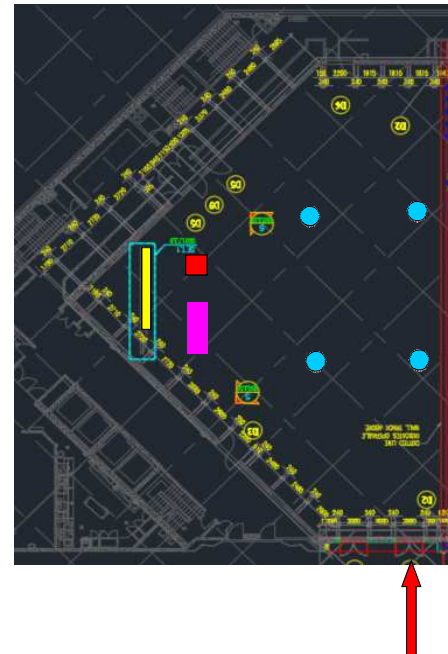


CONGRESS NAME	ESC Asia, Singapore	
Room Name	LR1 - Canning Room	
Capacity	700 seats arranged in theatre style	
Stage Size	W: 732/ D: 488 / H: 60 cm	
For Chairpersons	Table Dimensions	1.8 x 0.76m x 2
	Standard setup	2 Tables + 4 chairs
	Microphones	3 wired Goose Neck
	Video Monitor	42" on chairperson table x 1
	Camera	NO
For Speaker	Lectern Dimensions	W: 60 / D: 50 / H: 120 cm
	Microphones	2 Wired Goose Neck
	Computer	1 classic laptop Cyim networked with SSC
	Camera	YES
Main Screen	6.10 x 6.10m soit 16/9 : 6,1 x 4.3m	
Projector	12K - 1920*1080	
PinP	YES	
Voting / Ask a question system	YES	
Live sessions enabled	NO	
Audience	4 HAND HELD WIRELESS	
External monitor for room programme and overflow	NO	

Lecture Room plan

- Screen
- Room entrance(s)
- Microphone Q/A
- Chairperson table
- Lectern



-