

EXHIBITION @ ESC Congress 2020



MEET THE TEAM



AXEL BROWNE

Project Lead

Commercial Exhibition
Meeting Rooms



JULIA MEUNIER

Project Lead

Commercial Exhibition
Digital Health Area

Contact us at: exhibition@escardio.org

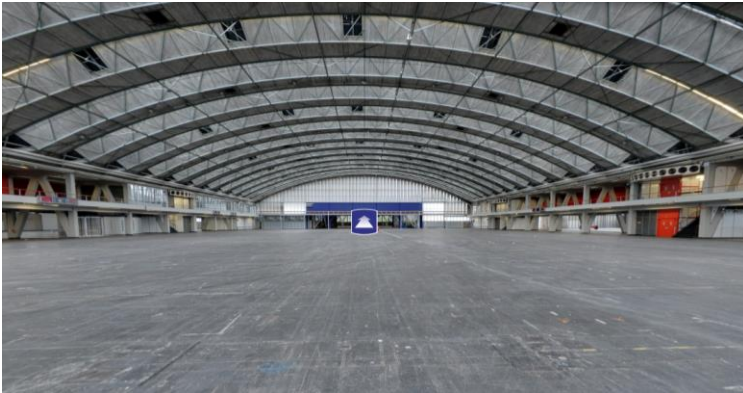


| MAIN AUDITORIUM | |
|---|------|
| Auditorium | 3200 |
| ESC PLAZA | |
| The Global Exchange | 50 |
| THE HUB | |
| Hub 1 | 300 |
| Hub 2 | 300 |
| Hub 3 | 250 |
| Hub 4 | 250 |
| Hub 5 | 300 |
| POSTER AREA | |
| Centre Stage | 500 |
| Agora | 100 |
| Science Box | 50 |
| Case Corner | 50 |
| DIGITAL HEALTH AREA | |
| Stage 1 | 100 |
| Stage 2 | 100 |
| VILLAGE 1 Arrhythmias and Device Therapy | |
| Lecture Room 1 | 500 |
| Lecture Room 2 | 1000 |
| VILLAGE 2 Hypertension, Preventive Cardiology, Cardiovascular Disease in Special Populations | |
| Lecture Room 3 | 800 |
| Lecture Room 4 | 800 |
| Lecture Room 5 | 350 |
| VILLAGE 3 Basic Science | |
| Lecture Room 6 | 350 |
| Lecture Room 7 | 350 |
| VILLAGE 4 Imaging | |
| Lecture Room 8 | 500 |
| Lecture Room 9 | 300 |
| VILLAGE 5 Valvular, Myocardial, Pericardial, Pulmonary, Congenital Heart Disease | |
| Lecture Room 10 | 350 |
| Lecture Room 11 | 350 |
| VILLAGE 6 Coronary Artery Disease, Acute Coronary Syndromes, Acute Cardiac Care | |
| Lecture Room 12 | 870 |
| Lecture Room 13 | 350 |
| VILLAGE 7 Aortic Disease, Peripheral Vascular Disease, Stroke Interventional Cardiology and Cardiovascular Surgery | |
| Lecture Room 14 | 870 |
| Lecture Room 15 | 350 |
| VILLAGE 8 Heart Failure | |
| Lecture Room 16 | 500 |
| Lecture Room 17 | 1000 |

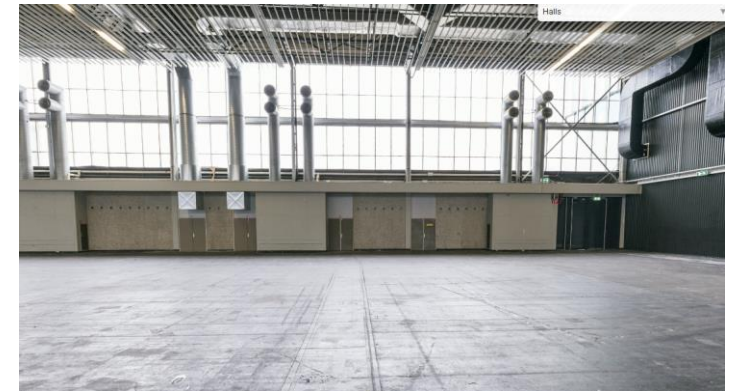
EXHIBITION

Over 22 000m² (gross) of hall space to host:

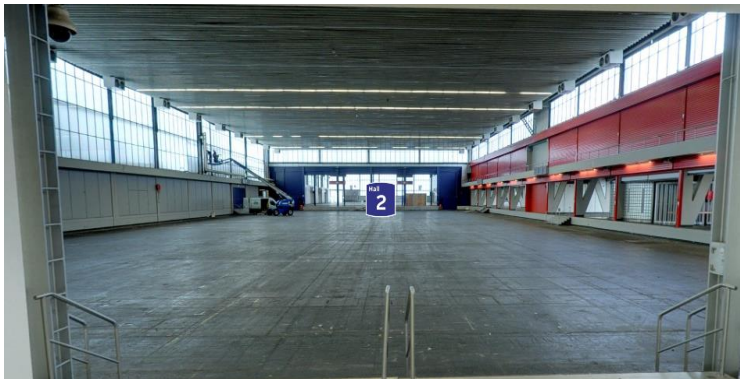
- 18 000m² (gross) of Exhibition surrounded by scientific activities
- a 4 000m² (gross) Digital Health Area
- Meeting on the Go area (Location TBC)



*Hall 1
Exhibition
15 000m²*



*Hall 5
Exhibition &
Posters
2 000m²*



*Hall 2
DHA
4 000m²*



*Hall 6
Exhibition
1 000m²*

4,000_{m²}

VS 2 300m²

2

DIGITAL HEALTH STAGES

1

LARGER EXHIBITION AREA

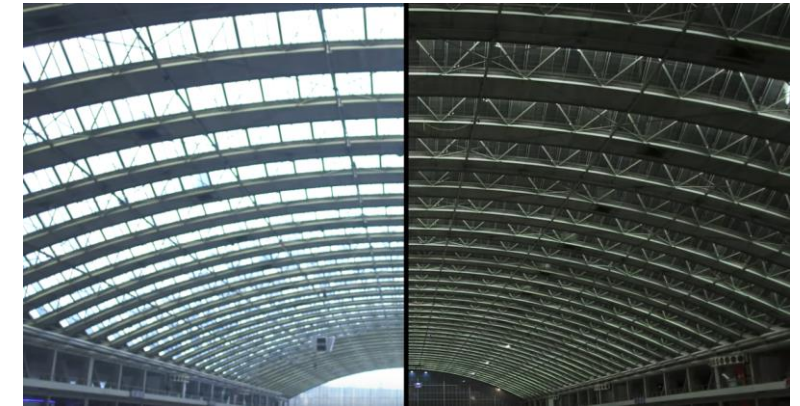
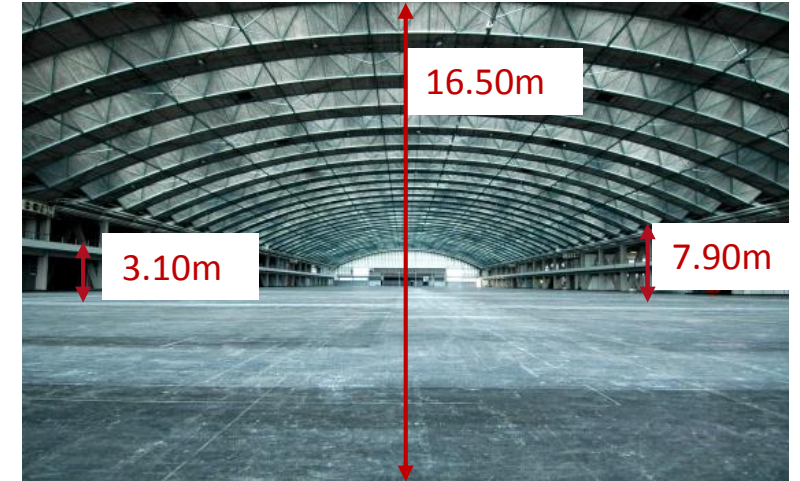
1

NETWORKING AREA



TECHNICAL ASPECTS OF HALL 1

- Electricity, water and internet connections come from ducts from the floor
- The ceiling height varies from 7.90m on the sides to 16.50m in the middle (Hall 1).
- Rigging possible everywhere in Hall 1
- Hall 1 will be darkened
- 4 catering points will be opened in Hall 1
- Central location of Hall 1 and easy access to the other halls



HUBS

EXHIBITION FLOORPLAN

SSC

Meeting
Rooms
&
Practical
Tutorials

Digital
Health
Area

Meeting Rooms (first Floor)

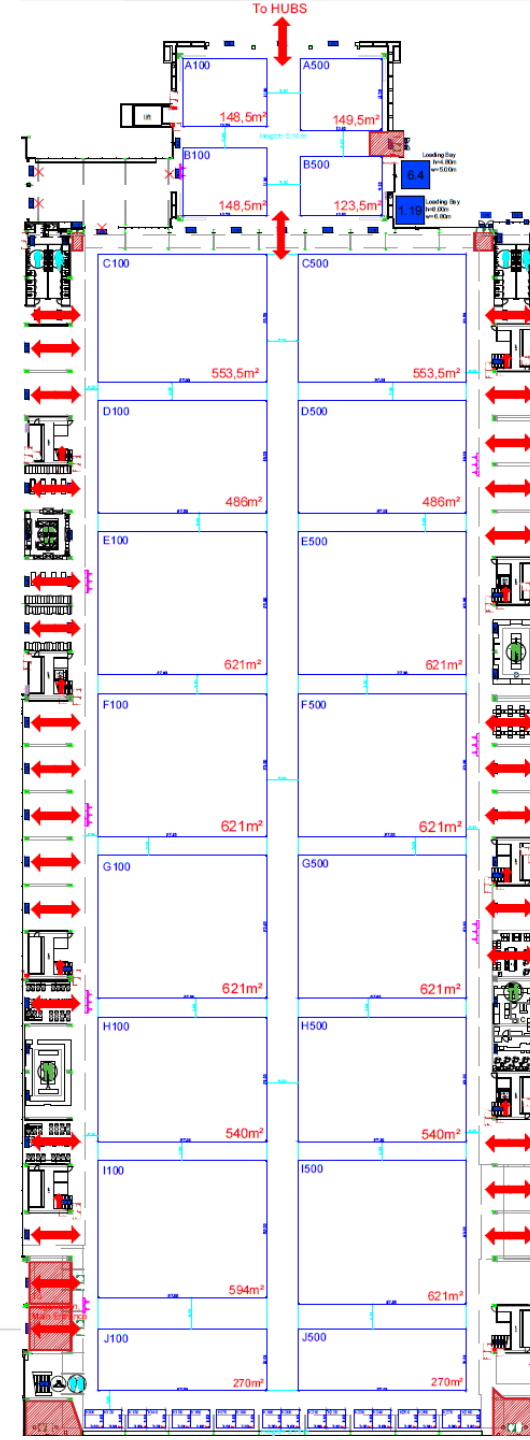
Meeting Rooms (first Floor)

POSTERS

EXHIBITION

EXHIBITION

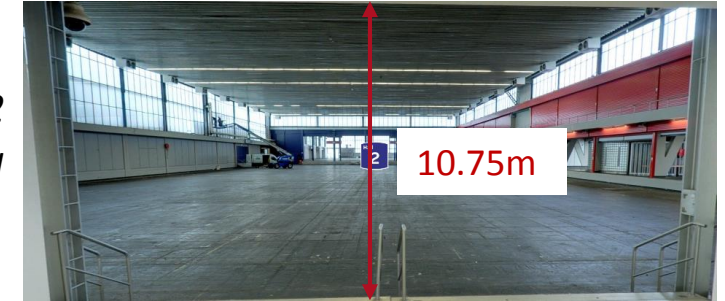
PRESS



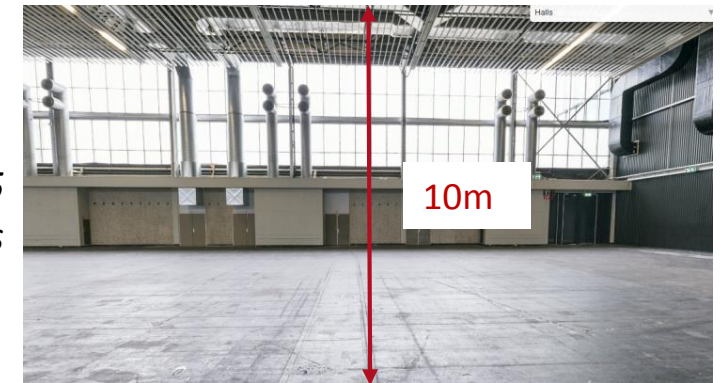
TECHNICAL ASPECTS OF HALLS 2, 5 & 6

- Electricity, water and internet connections come from ducts from the floor
- The ceiling heights:
 - Hall 2: 10.75m
 - Hall 5: 10m
 - Hall 6: 5.10m
- Rigging possible everywhere in all three Halls (with a height limit of 4.5 m in Hall 6)
- Hall 2, 5 (partially) and 6 will be darkened
- Easy access to the surrounding halls

Hall 2
Digital Health Area



Hall 5
Exhibition & Posters



Hall 6
Exhibition



2019 vs 2020

- No more columns in the Exhibition halls
- Higher ceilings
- Stands will be visible from the balconies
- Back to higher construction and suspension heights:

Maximum construction height for stands:

| | |
|---|------|
| between 6m ² and 25m ² | 2.5m |
| between 26m ² and 45m ² | 3.5m |
| between 46m ² and 60m ² | 4m |
| between 61m ² and 80m ² | 4.5m |
| between 81m ² and 100m ² | 5m |
| between 101m ² and 300m ² | 6m |
| between 301m ² and 500m ² | 6.5m |
| between 501m ² and 600m ² | 7m |
| over 600m ² | 7.5m |

Maximum suspension point height for stands:

| | |
|---|---------------|
| under 60m ² | not permitted |
| between 60m ² and 100m ² | 6m |
| between 101m ² and 300m ² | 6.5m |
| between 301m ² and 500m ² | 7m |
| over 500m ² | 7.5m |

Exhibition Opening Hours:

| | |
|-----------------------|---------------|
| Saturday 29 August | 10:00 - 17:00 |
| Sunday 30 August | 10:00 - 17:00 |
| Monday 31 August | 10:00 - 17:00 |
| Tuesday 1 September | 10:00 - 17:00 |
| Wednesday 2 September | CLOSED |

TIMELINE

Tue 29 & Wed 30 October
Industry Site Visit – ESC
Congress Amsterdam 2020

Wed 30 October
Sales Opening

Wed 1 April
Opening of the
Exhibitor Services
Webshop



**ESC Congress
Amsterdam 2020**
29 August – 2 September



Fri 15 November
Deadline for application for Top 10
point holders followed by the
beginning of stands assignment
according to the accrued point
ranking

Sun 15 December
Deadline for application
for Top 20 point holders

Wed 15 January
Deadline for application
with priority status

Fri 24 April
Exhibitor Profile Deadline

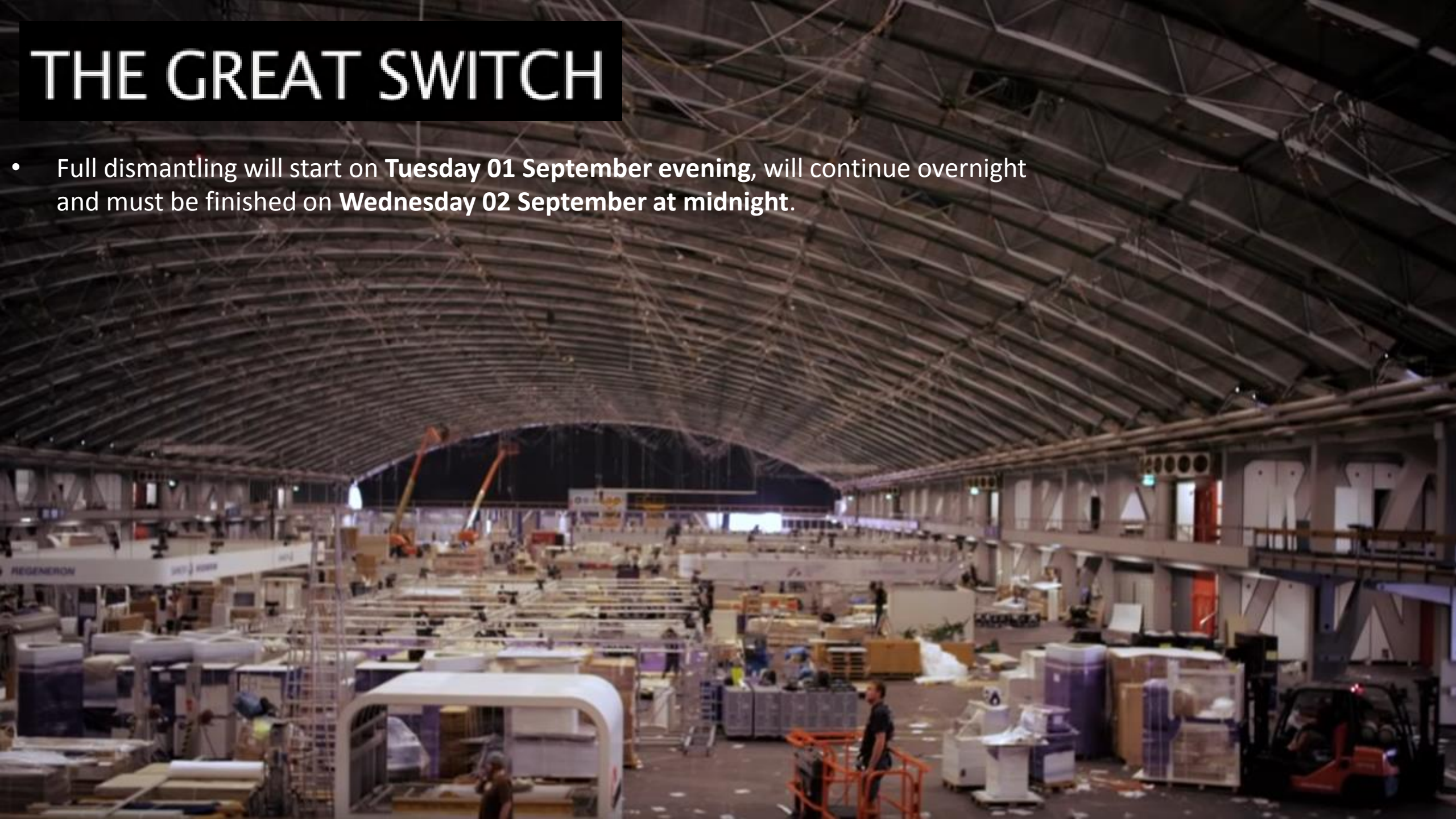
Mon 11 May
Stand Design Deadline

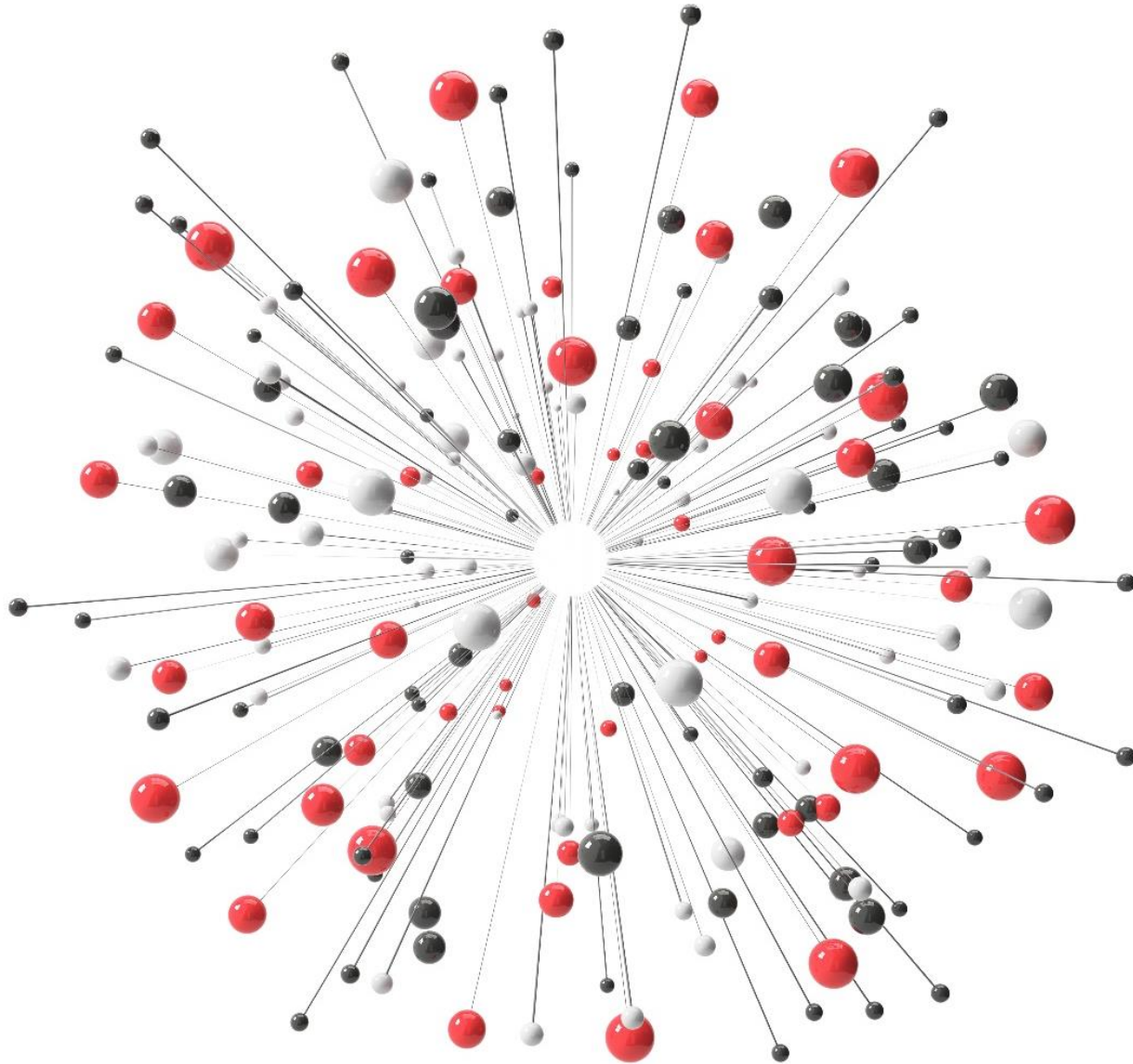
Wed 29 July
Stand Services Deadline for orders

**ESC Congress
Amsterdam 2020**

THE GREAT SWITCH

- Full dismantling will start on **Tuesday 01 September evening**, will continue overnight and must be finished on **Wednesday 02 September at midnight**.





DO YOU
HAVE ANY
QUESTIONS ?



Don't hesitate to contact us: exhibition@escardio.org