

500 pax room - Village 4 - Rome

ESC 2019

On-site construction	24 August 2019 until	06 September 2019
Operational	31 August 2019 until	04 September 2019

Room Setting

1	Custom fabrication	Entrance
49 m	X30 general	Rigging for projection/sound/light
1	Table	60x60 cm next to lectern
1	Front of house set 1.2-1.6m high/18m long	
1	Lectern grey	

Video Facilities

1	Video/data projector 14.000 ansi lumen HD, 3DLP	
1	Front projection screen 8x4,5 mtr	
1	Camera HD Pan AW-HE130KE (incl Remote)	
2	LED screen 46"	
1	Infrastructure	

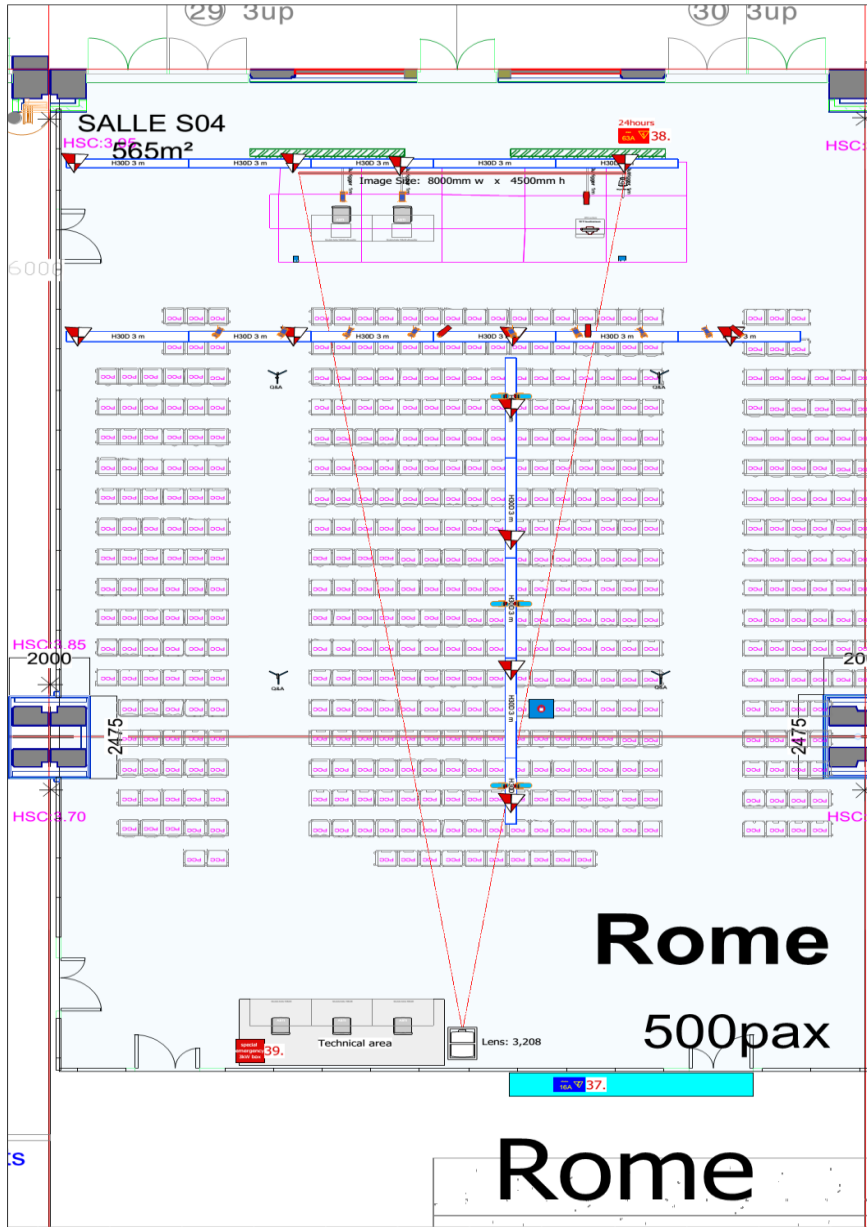
Audio Facilities

2	Condensor Microphone	Lectern microphone
4	Condensor Microphone	Faculty table microphone
4	Dynamic Microphone	Q&A microphone
1	Digital audiomixer 32-channel	
1	Column Array Meyer CAL 32	
1	DI for external audio source	
3	Loudspeaker active	Monitoring for stage and tech use
1	Laptop for audio playback	

Lighting Facilities

4	Profiel LED zoom 15-40deg. 5600k	
6	LED Fresnel 2700-6000k	
6	LED Spot 49deg. 3000k	
1	Emergency Lighting	
1	Lighting console 12/24 chan.	

1 ESC 2019 - Rome@A3
Scale: 1:125



Rev. no.	Rev. date	Description	by

Rome

Room dimension
 Number of seats 500 seats
 Stage size 10m x 3m
 Screen size 8m x 4.5m

ACS INNOVATIVE AUDIOVISUAL SOLUTIONS

Sheet name	ESC 2019 - Rome@A3	Production	ESC 2019
Scale	1:125@A3	Units	MM
Pub. date	May 8, 2019	Location	Porte de Versailles
Drawn by	P.A.	Event date	

Client	ESC
Location	Porte de Versailles
Event date	

© 2018 ACS Audiovisual All rights reserved. No part of this publication may be reproduced or transmitted in any form or by any means without the express permission of ACS Audiovisual.