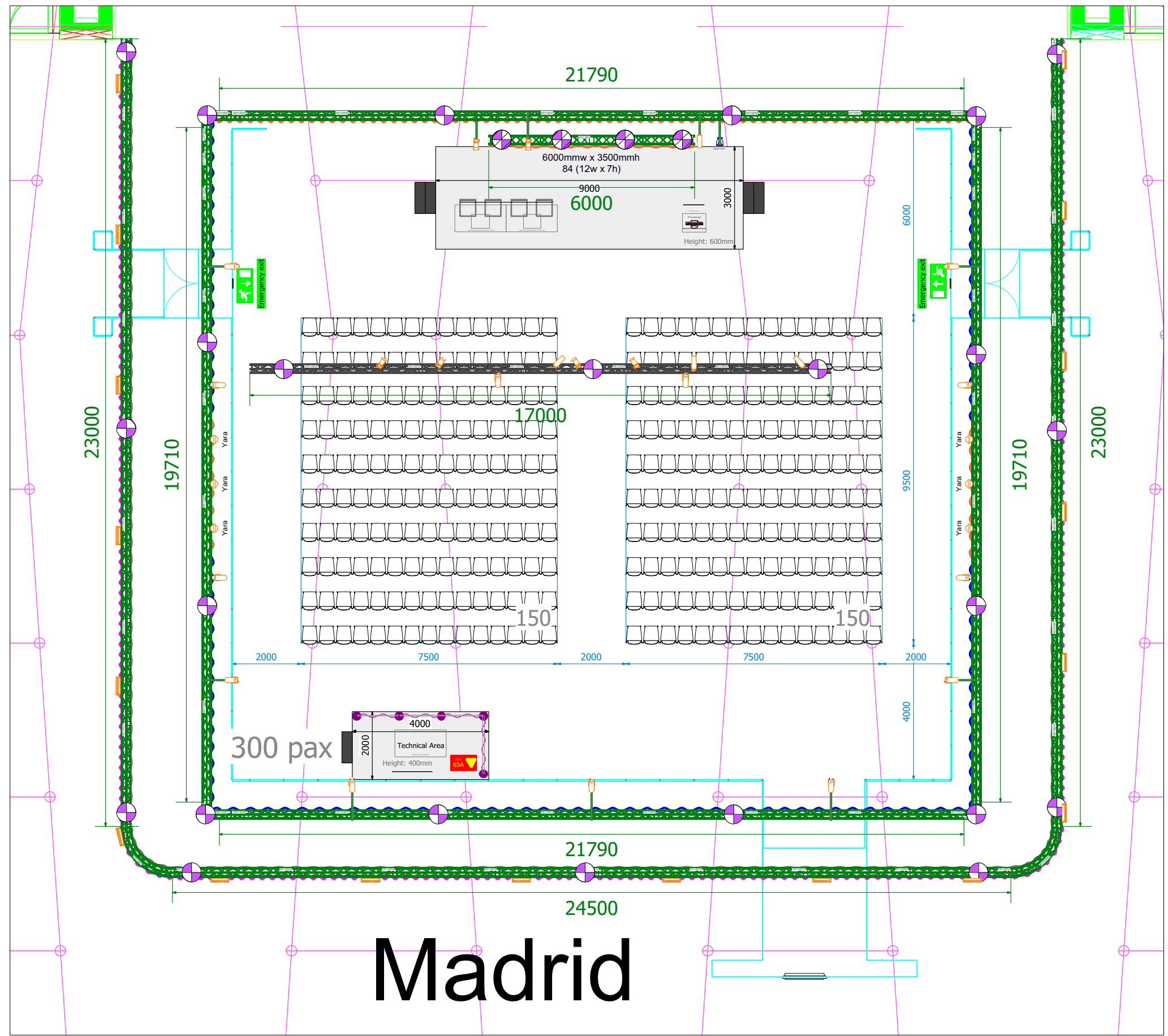


1

ESC 2018 Madrid@A3

Scale: 1:125



B4

Madrid

Room:
Seats: 300 seats
Stage: 9m x 3m
Screen: 6m x 3.5m

Symbol key

Revision notes



Event:	ESC 2018
Event date:	
Location:	Munchen Messe
Contact:	Mr C.van Vendelo
Client:	ESCardio
Scale:	1:125@A3 Units: mm
File name:	ESC 2018 Master
Date:	14-11-2017
Drawn by:	PA

Madrid

Room Setting

1	Chair table	
3	Chair	
1	Table	60x60 cm next to lectern
1	Front of house set 1.2-1.6m high/18m long	
1	Lectern grey	

Lighting Facilities

6	Cyclo 1kW light symmetrical	Ambient room light
6	Fresnel Strand Studio 2kW pole	
6	Outriggerpipe 1 metre Prolyte	
1	Emergency Lighting	
4	Profile R&J 1kW	Spotlight on lectern (3x front, 1x rear)
5	Fresnel Strand Studio 1kW pole	Spotlight on lectern (3x front, 2x rear)
6	LED Wash 65W	
36 mtr	Truss for lighting facilities	
1	Lighting console 12/24 chan.	

Video Facilities

1	Video/data projector 8000 ansi lumen HD, 3DLP	Main projector
1	Front/rear proj. screen 680x380	Main projection screen
1	LED screen 46"	Preview monitor in front of stage
1	Laptop	Via Cyim
1	Camera HD Pan AW-HE130KE (incl Remote)	
1	Infrastructure	Cabling and components

Audio Facilities

2	Condensor Microphone	Lectern microphone
2	Condensor Microphone	Faculty table microphone
4	Dynamic Microphone	Q&A microphone
1	Digital audiomixer 32-channel	
1	Column Array Meyer CAL 32	
1	DI for external audio source	
3	Loudspeaker active	Monitoring for stage and tech use