

1

ESC 2018 Copenhagen@A3

Scale: 1:100



A2

Copenhagen

Room: 19m x 21m
Seats: 300 seats
Stage: 9m x 3m
Screen: 5.8m x 3.26m

Symbol key

Revision notes



Event:	ESC 2018
Event date:	
Location:	Munchen Messe
Contact:	Mr C.van Vendelo
Client:	ESCardio
Scale:	1:100@A3 Units: mm
File name:	ESC 2018 Master
Date:	14-11-2017
Drawn by:	PA

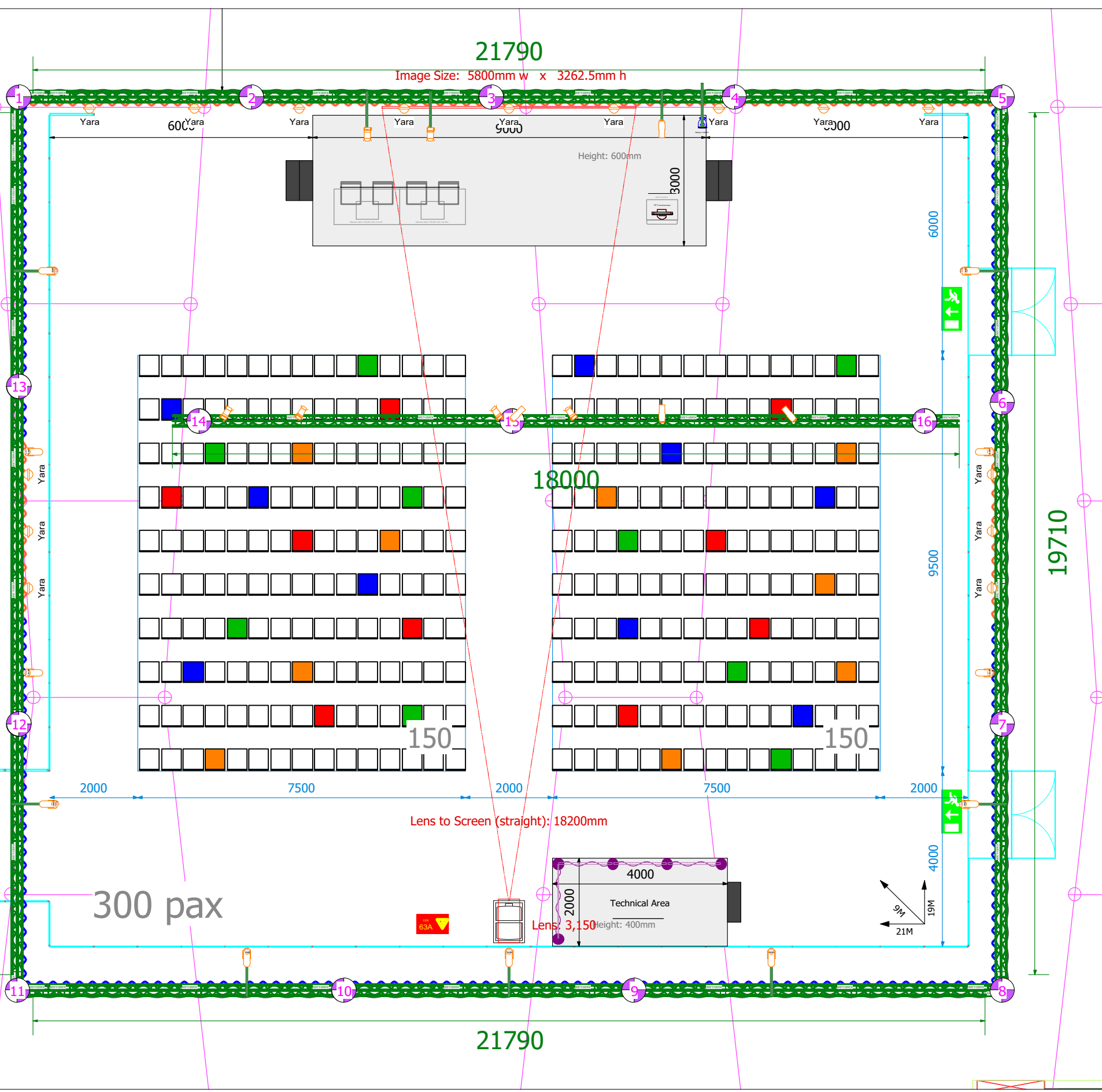
Copenhagen

Curtain Trim

30000

19710

11



21790

Image Size: 5800mm w x 3262.5mm h

Height: 600mm

18000

Lens to Screen (straight): 18200mm

300 pax

21790

9M
19M
21M

19710

2000

4000

19M

21M

Yara

600

Yara

Yara

Yara

Yara

Yara

Yara

Yara

Yara

Yara

Yara

Yara

Yara

Yara

Yara

Yara

Yara

Yara

Yara

Yara

Yara

Yara

Yara

Yara

Yara

Yara

Yara

Yara

Yara

Yara

150

150

7500

7500

2000

2000

10

9

8

7

6

5

2

3

4

1

2

3

4

5

6

7

8

9

10

11

12

13

14

15

16

Room Setting

1	Chair table	
3	Chair	
1	Table	60x60 cm next to lectern
1	Front of house set 1.2-1.6m high/18m long	
1	Lectern grey	

Lighting Facilities

6	Cyclo 1kW light symmetrical	Ambient room light
6	Fresnel Strand Studio 2kW pole	
6	Outriggerpipe 1 metre Prolyte	
1	Emergency Lighting	
4	Profile R&J 1kW	Spotlight on lectern (3x front, 1x rear)
5	Fresnel Strand Studio 1kW pole	Spotlight on lectern (3x front, 2x rear)
6	LED Wash 65W	
36 mtr	Truss for lighting facilities	
1	Lighting console 12/24 chan.	

Video Facilities

1	Video/data projector 8000 ansi lumen HD, 3DLP	Main projector
1	Front/rear proj. screen 680x380	Main projection screen
1	LED screen 46"	Preview monitor in front of stage
1	Laptop	Via Cyim
1	Camera HD Pan AW-HE130KE (incl Remote)	
1	Infrastructure	Cabling and components

Audio Facilities

2	Condensor Microphone	Lectern microphone
2	Condensor Microphone	Faculty table microphone
4	Dynamic Microphone	Q&A microphone
1	Digital audiomixer 32-channel	
1	Column Array Meyer CAL 32	
1	DI for external audio source	
3	Loudspeaker active	Monitoring for stage and tech use