




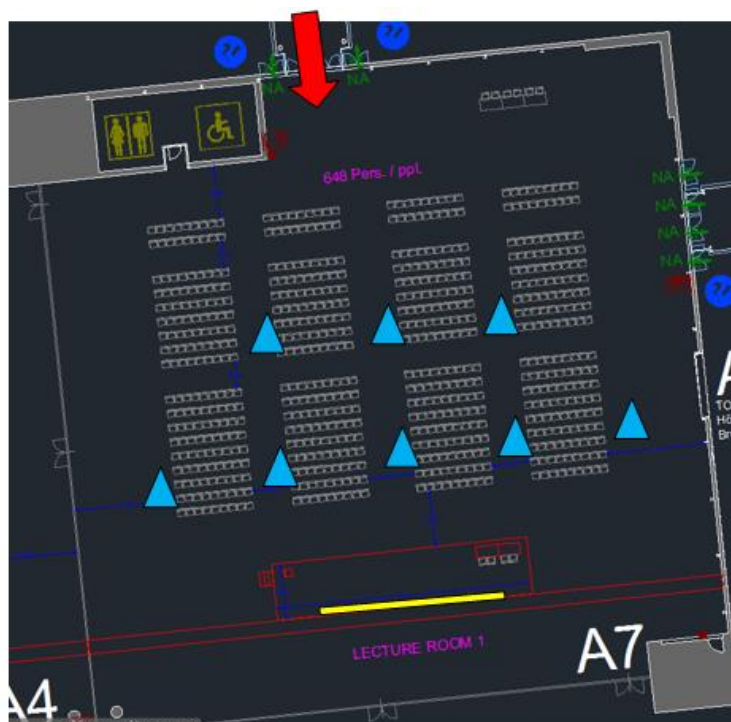


Lecture Room Technical Specifications

Congress name		EHRA EUROPACE – CARDIOSTIM 2017
Room Name		Sokolov (Hall 7)
Capacity		648 seats arranged in theatre style
For Chairpersons 	Stage size	W: 8 D: 4 H:0,6 metres
	Table Dimension	W: 1,4 H: 0,74 metres
	Standard setup	2 tables + 4 chairs
	Microphones	4 wired
	Video monitor	1 screen 42" in front of table
	Camera	N/A
For Speaker	Stage size	Central stage
	Lectern Dimension	W: 0,57 H: 1,14 metres
	Microphones	2 wired goose neck
	Computer	1 laptop networked with SSC
	Camera	N/A
Main screen (16:9)		1 screen 10 x 5,60 metres
Projector		2 x 15 0000 AL
PinP		N/A
Audience	Microphones	8 wireless for Q&A
External monitor for room programme and overflow		1 screen 55" approx. Overflow capacity: 30 pax.

Lecture room plan:

-  Screen location
-  Selected entrance(s)
-  External screen for overflow / information
-  Q&A Microphone location



Caution: External monitor located at the entrance of the corridor