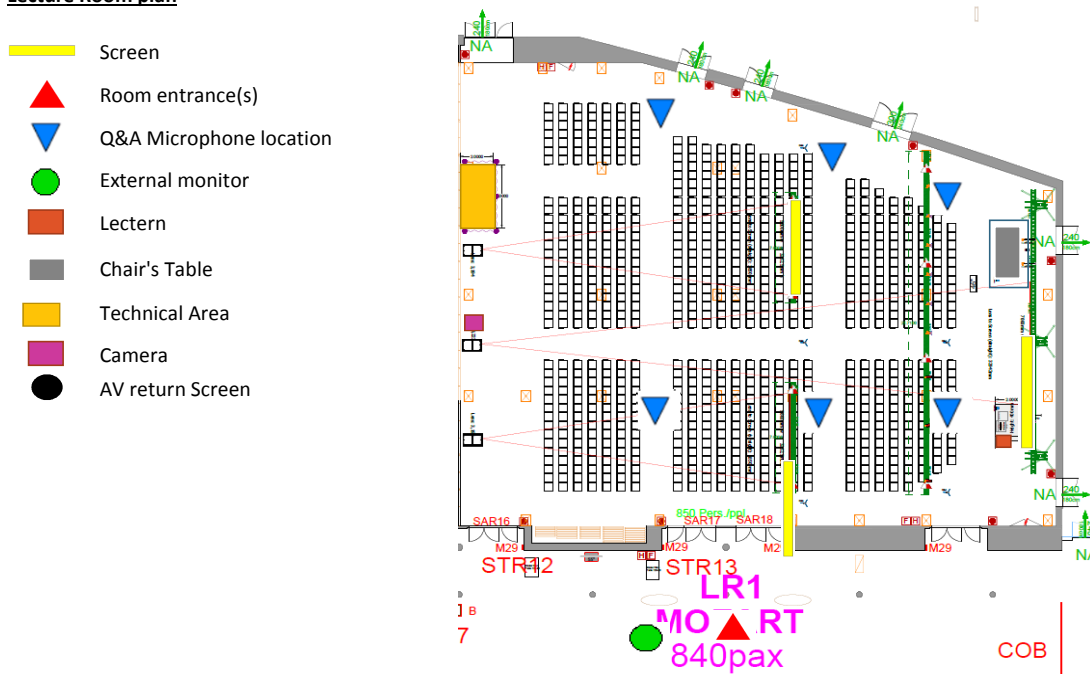


<b>CONGRESS NAME</b>		<b>EuroEcho 2019, Vienna</b>
<b>Room Name</b>		<b>LR1 - Mozart - Strauss 2+3</b>
<b>Capacity</b>		840 seats arranged in theatre style
<b>Stage Size</b>		W: 500 / D: 200 / H: 40 cm (Chairpers) & 200 / 200 / 40(Lectern)
<b>For Chairpersons</b>	Table Dimensions	W x D x H : 150 x 80 x 75cm
	Standard setup	2 Tables + 4 chairs
	Microphones	2 wired Goose Neck
	Video Monitor	46"
	Camera	YES
<b>For Speaker</b>	Lectern Dimensions	W: 78 / D: 45 / H: 118 cm
	Microphones	2 Wired Goose Neck
	Computer	1 Electern (All in One) networked with SSC
	Camera	YES
<b>Main Screen / Secondary Screen</b>		1 x (780*4380) and 2 x (580*325)
<b>Projector</b>		16K lumens - (1920*1080) and 2 x 6K lumens (1920*1080)
<b>PinP</b>		YES
<b>Voting / Ask a question system</b>		Ask Only
<b>Live sessions enabled</b>		NO
<b>Audience</b>		6 HAND HELD WIRELESS
<b>External monitor for room programme and overflow</b>		YES : 1 x 55" ON STAND

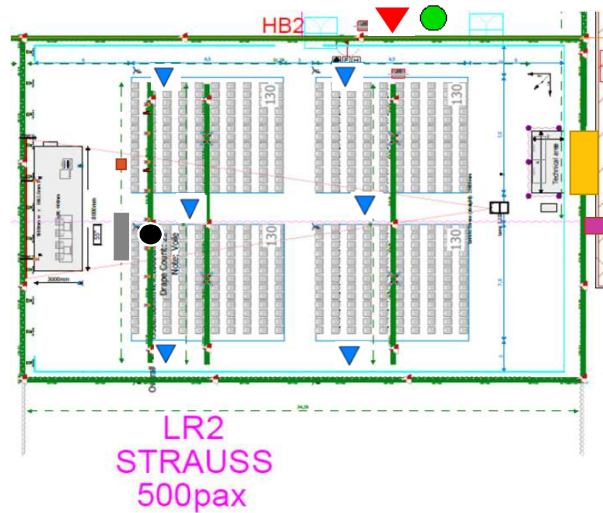
**Lecture Room plan**



<b>CONGRESS NAME</b>	<b>EuroEcho 2019, Vienna</b>	
<b>Room Name</b>	<b>LR2 - Strauss - Hall B</b>	
<b>Capacity</b>	500 seats arranged in theatre style	
<b>Stage Size</b>	W: 800 / D: 300 / H: 40 cm	
<b>For Chairpersons</b>	Table Dimensions	W x D x H : 150 x 80 x 75cm
	Standard setup	2 Tables + 4 chairs
	Microphones	2 wired Goose Neck
	Video Monitor	55"
	Camera	YES
<b>For Speaker</b>	Lectern Dimensions	W: 78 / D: 45 / H: 118 cm
	Microphones	2 Wired Goose Neck
	Computer	1 Electern (All in One) networked with SSC
	Camera	YES
<b>Main Screen</b>	1 x (900*510)	
<b>Projector</b>	16K lumens - (1920*1080)	
<b>PinP</b>	YES	
<b>Voting / Ask a question system</b>	Ask and Voting	
<b>Live sessions enabled</b>	NO	
<b>Audience</b>	6 HAND HELD WIRELESS	
<b>External monitor for room programme and overflow</b>	YES : 1 x 55" ON STAND	

#### Lecture Room plan

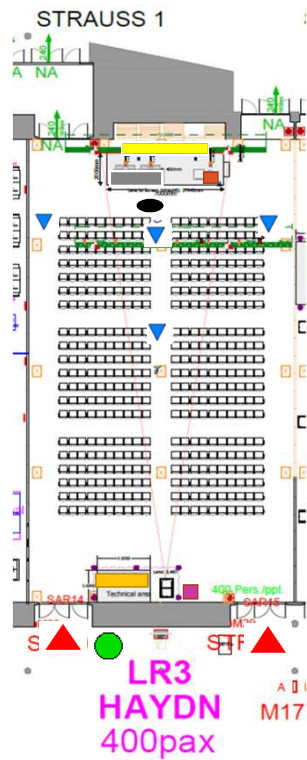
- Screen
- Room entrance(s)
- Q&A Microphone location
- External monitor
- Lectern
- Chair's Table
- Technical Area
- Camera
- AV return Screen



<b>CONGRESS NAME</b>		<b>EuroEcho 2019, Vienna</b>
<b>Room Name</b>		<b>LR3 - Haydn - Strauss1</b>
<b>Capacity</b>		400 seats arranged in theatre style
<b>Stage Size</b>		W: 700 / D: 200 / H: 40 cm
<b>For Chairpersons</b>	Table Dimensions	W x D x H : 150 x 80 x 75cm
	Standard setup	2 Tables + 4 chairs
	Microphones	2 wired Goose Neck
	Video Monitor	46"
	Camera	NO
<b>For Speaker</b>	Lectern Dimensions	W: 78 / D: 45 / H: 118 cm
	Microphones	2 Wired Goose Neck
	Computer	1 Electern (All in One) networked with SSC
	Camera	YES
<b>Main Screen</b>		780*440
<b>Projector</b>		14K - 1920*1080
<b>PinP</b>		YES
<b>Voting / Ask a question system</b>		Ask Only
<b>Live sessions enabled</b>		NO
<b>Audience</b>		4 HAND HELD WIRELESS
<b>External monitor for room programme and overflow</b>		YES : 1 x 55" ON STAND

**Lecture Room plan**

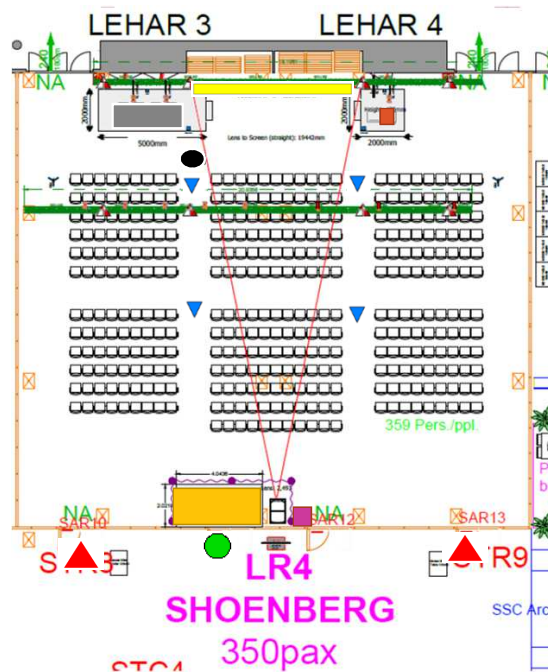
- Screen
- Room entrance(s)
- Q&A Microphone location
- External monitor
- Lectern
- Chair's Table
- Technical Area
- Camera
- AV return Screen



<b>CONGRESS NAME</b>		<b>EuroEcho 2019, Vienna</b>
<b>Room Name</b>		<b>LR4 - SHOENBERG - Lehar 3 /4</b>
<b>Capacity</b>		350 seats arranged in theatre style
<b>Stage Size</b>		W: 500 / D: 200 / H: 40 cm (chairperson) & 200x200x40cm(Lectern)
<b>For Chairpersons</b>	Table Dimensions	W x D x H : 150 x 80 x 75cm
	Standard setup	2 Tables + 4 chairs
	Microphones	2 wired Goose Neck
	Video Monitor	46"
	Camera	NO
<b>For Speaker</b>	Lectern Dimensions	W: 78 / D: 45 / H: 118 cm
	Microphones	2 Wired Goose Neck
	Computer	1 Electern (All in One) networked with SSC
	Camera	YES
<b>Main Screen</b>		1 x 780*440
<b>Projector</b>		1 x 14K - 1920*1080
<b>PinP</b>		YES
<b>Voting / Ask a question system</b>		Ask Only
<b>Live sessions enabled</b>		NO
<b>Audience</b>		4 HAND HELD WIRELESS
<b>External monitor for room programme and overflow</b>		YES : 1 x 55" ON STAND

**Lecture Room plan**

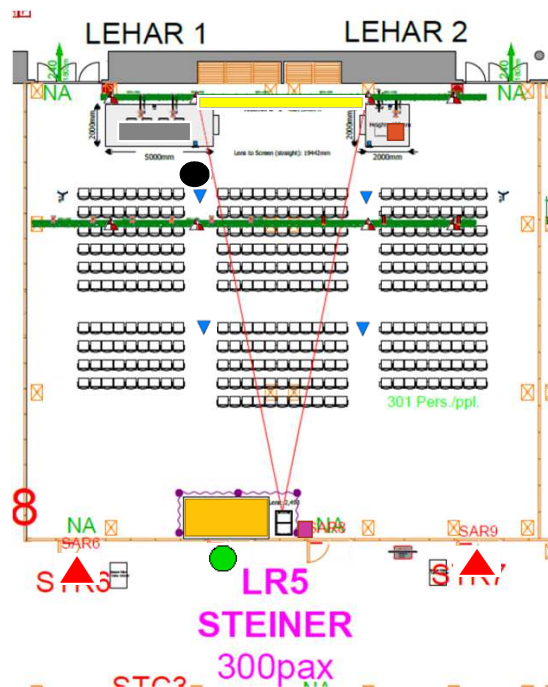
- Screen
- Room entrance(s)
- Q&A Microphone location
- External monitor
- Lectern
- Chair's Table
- Technical Area
- Camera
- AV return Screen



<b>CONGRESS NAME</b>	<b>EuroEcho 2019, Vienna</b>	
<b>Room Name</b>	<b>LR5 - STEINER - Lehar 1/2</b>	
<b>Capacity</b>	300 seats arranged in theatre style	
<b>Stage Size</b>	W: 500 / D: 200 / H: 40 cm (chairperson) & 200x200x40cm(Lectern)	
<b>For Chairpersons</b>	Table Dimensions	W x D x H : 150 x 80 x 75cm
	Standard setup	2 Tables + 4 chairs
	Microphones	2 wired Goose Neck
	Video Monitor	46"
	Camera	NO
<b>For Speaker</b>	Lectern Dimensions	W: 78 / D: 45 / H: 118 cm
	Microphones	2 Wired Goose Neck
	Computer	1 Electern (All in One) networked with SSC
	Camera	YES
<b>Main Screen</b>	1 x 780*440	
<b>Projector</b>	1 x 14K - 1920*1080	
<b>PinP</b>	YES	
<b>Voting / Ask a question system</b>	Ask Only	
<b>Live sessions enabled</b>	NO	
<b>Audience</b>	4 HAND HELD WIRELESS	
<b>External monitor for room programme and overflow</b>	YES : 1 x 55" ON STAND	

**Lecture Room plan**

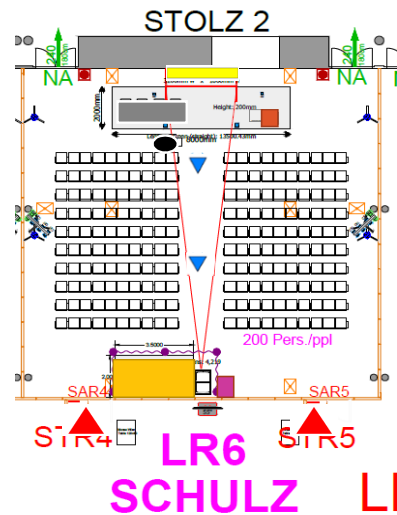
- Screen
- Room entrance(s)
- Q&A Microphone location
- External monitor
- Lectern
- Chair's Table
- Technical Area
- Camera
- AV return Screen



<b>CONGRESS NAME</b>	<b>EuroEcho 2019, Vienna</b>	
<b>Room Name</b>	<b>LR6- SCHULZ - Stolz 2</b>	
<b>Capacity</b>	190 seats arranged in theatre style	
<b>Stage Size</b>	W: 800 / D: 200 / H: 40 cm	
<b>For Chairpersons</b>	Table Dimensions	W x D x H : 150 x 80 x 75cm
	Standard setup	2 Tables + 4 chairs
	Microphones	2 wired Goose Neck
	Video Monitor	46" on chairperson table x 2
	Camera	NO
<b>For Speaker</b>	Lectern Dimensions	W: 78 / D: 45 / H: 118 cm
	Microphones	2 Wired Goose Neck
	Computer	1 Electern (All in One) networked with SSC
	Camera	YES
<b>Main Screen</b>	1 x 580*325	
<b>Projector</b>	1 x 8K - 1920*1080	
<b>PinP</b>	YES	
<b>Voting / Ask a question system</b>	Ask Only	
<b>Live sessions enabled</b>	NO	
<b>Audience</b>	2 HAND HELD WIRELESS	
<b>External monitor for room programme and overflow</b>	YES : 1 x 55" ON STAND	

**Lecture Room plan**

- Screen
- Room entrance(s)
- Q&A Microphone location
- External monitor
- Lectern
- Chair's Table
- Technical Area
- Camera
- AV return Screen



<b>CONGRESS NAME</b>	<b>EuroEcho 2019, Vienna</b>	
<b>Room Name</b>	<b>LR7- MAHLER - Stolz 1</b>	
<b>Capacity</b>	190 seats arranged in theatre style	
<b>Stage Size</b>	W: 800 / D: 200 / H: 40 cm	
<b>For Chairpersons</b>	Table Dimensions	W x D x H : 150 x 80 x 75cm
	Standard setup	2 Tables + 4 chairs
	Microphones	2 wired Goose Neck
	Video Monitor	46" on chairperson table x 2
	Camera	NO
<b>For Speaker</b>	Lectern Dimensions	W: 78 / D: 45 / H: 118 cm
	Microphones	2 Wired Goose Neck
	Computer	1 Electern (All in One) networked with SSC
	Camera	YES
<b>Main Screen</b>	1 x 580*325	
<b>Projector</b>	1 x 8K - 1920*1080	
<b>PinP</b>	YES	
<b>Voting / Ask a question system</b>	Ask Only	
<b>Live sessions enabled</b>	NO	
<b>Audience</b>	2 HAND HELD WIRELESS	
<b>External monitor for room programme and overflow</b>	YES : 1 x 55" ON STAND	

**Lecture Room plan**

- Screen
- Room entrance(s)
- Q&A Microphone location
- External monitor
- Lectern
- Chair's Table
- Technical Area
- Camera
- AV return Screen

